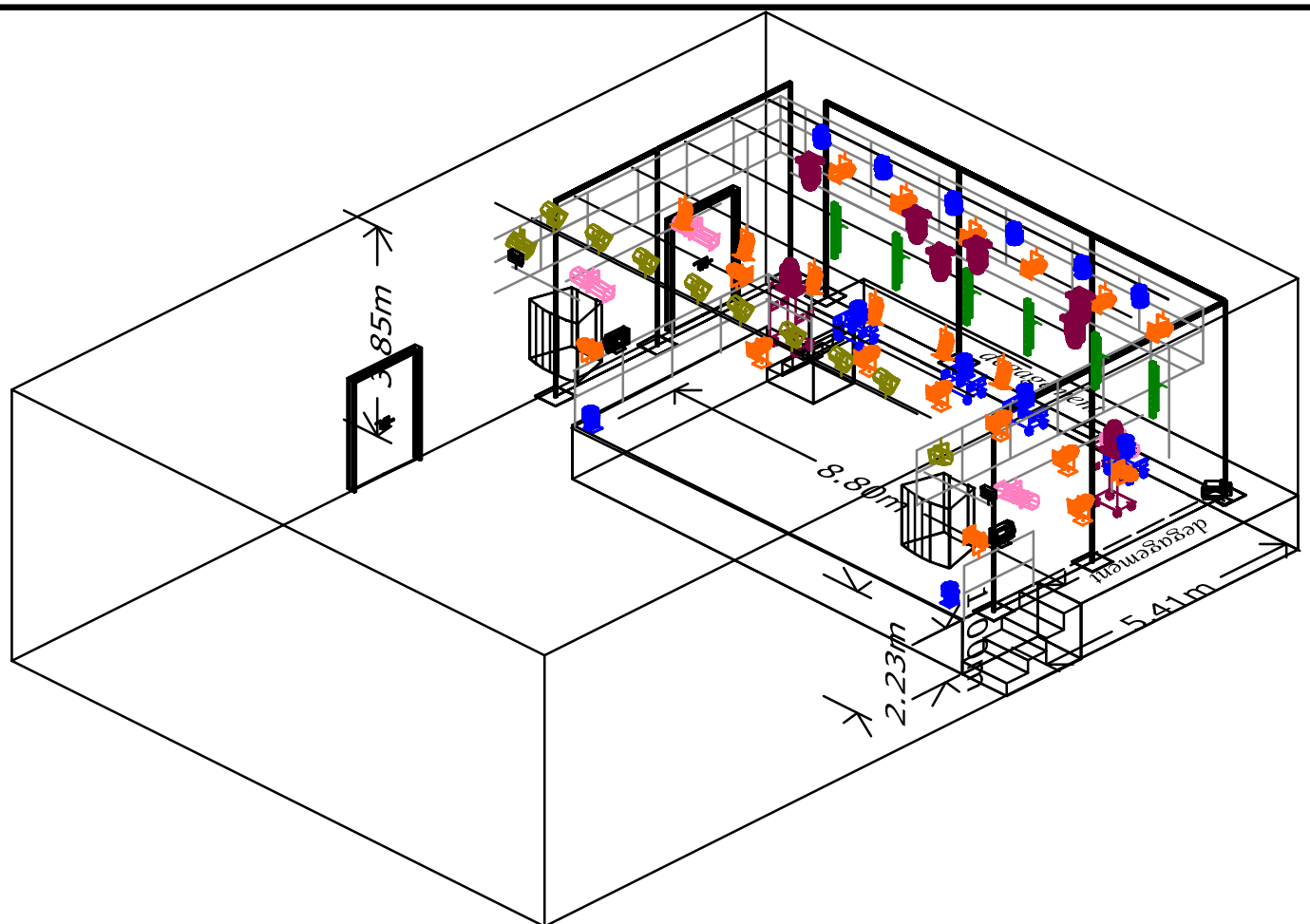
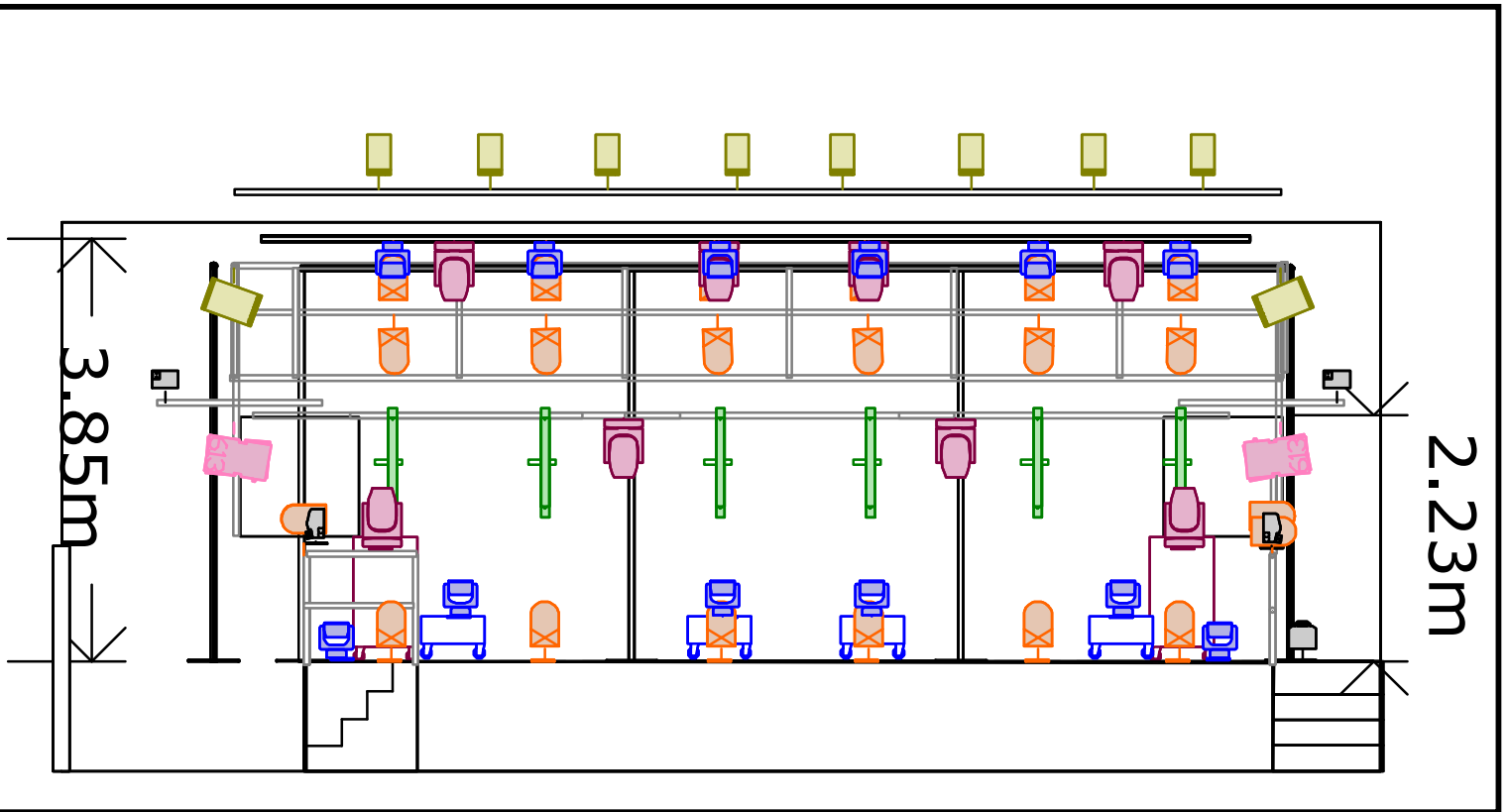
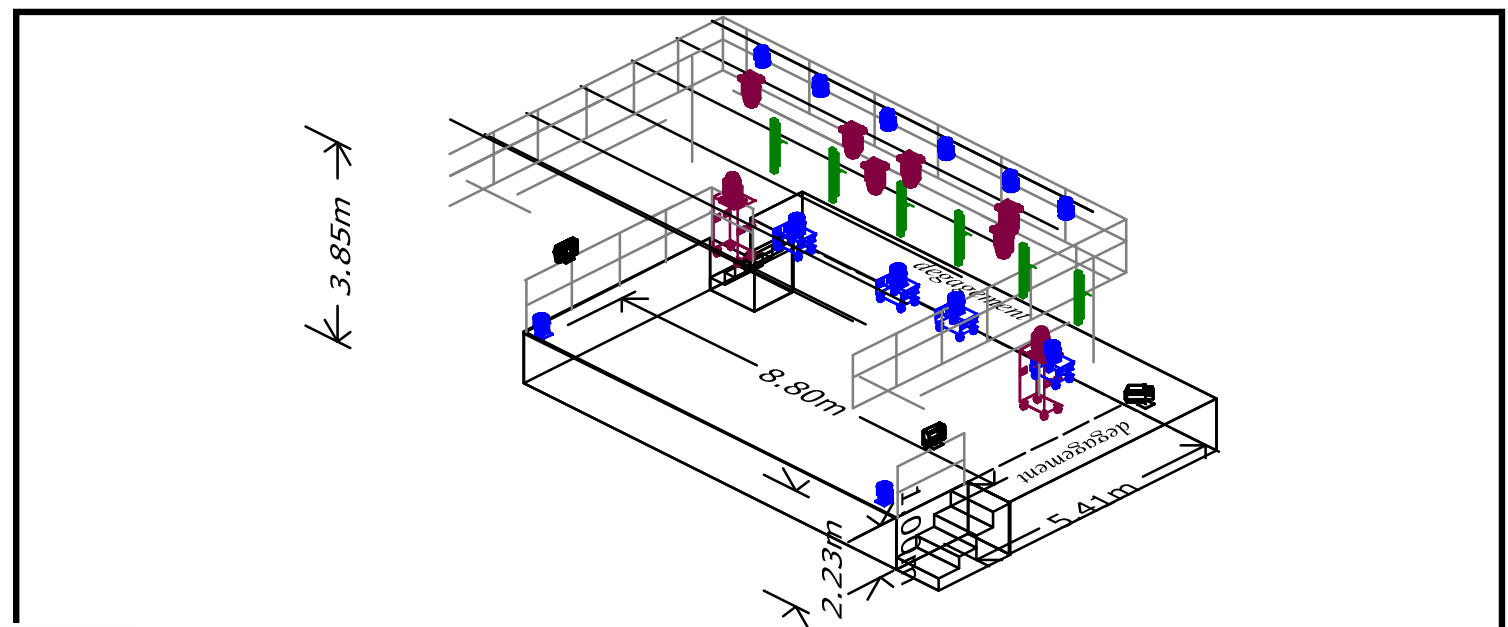
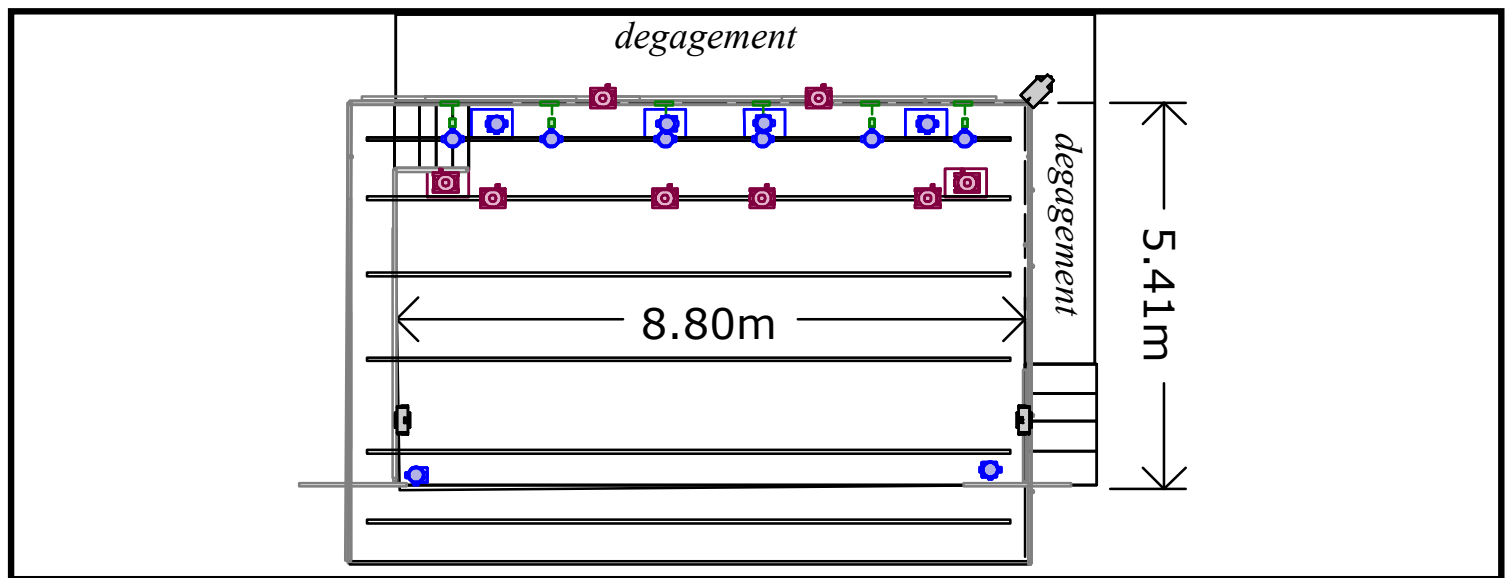
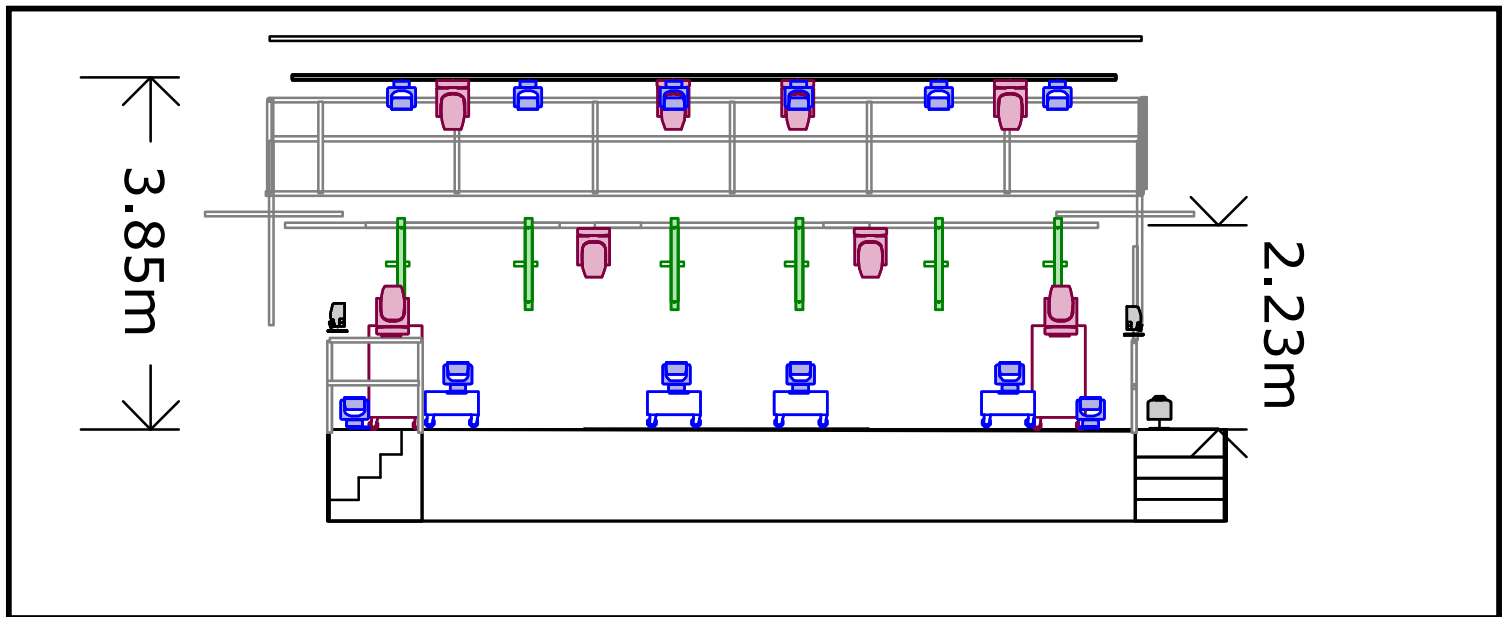


FGO-Barbara

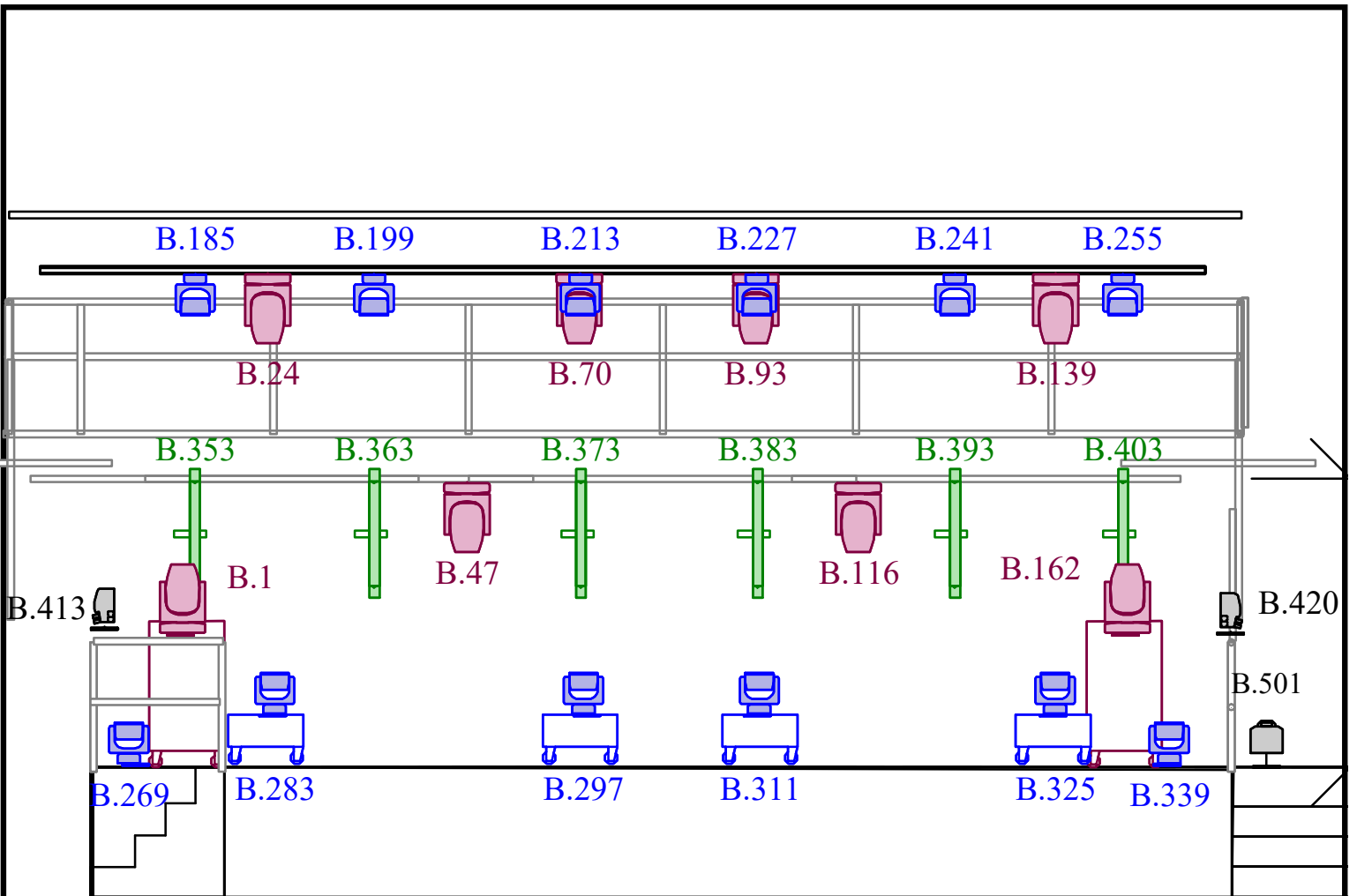
MAI 2024













IMPLANTATION MACHINES



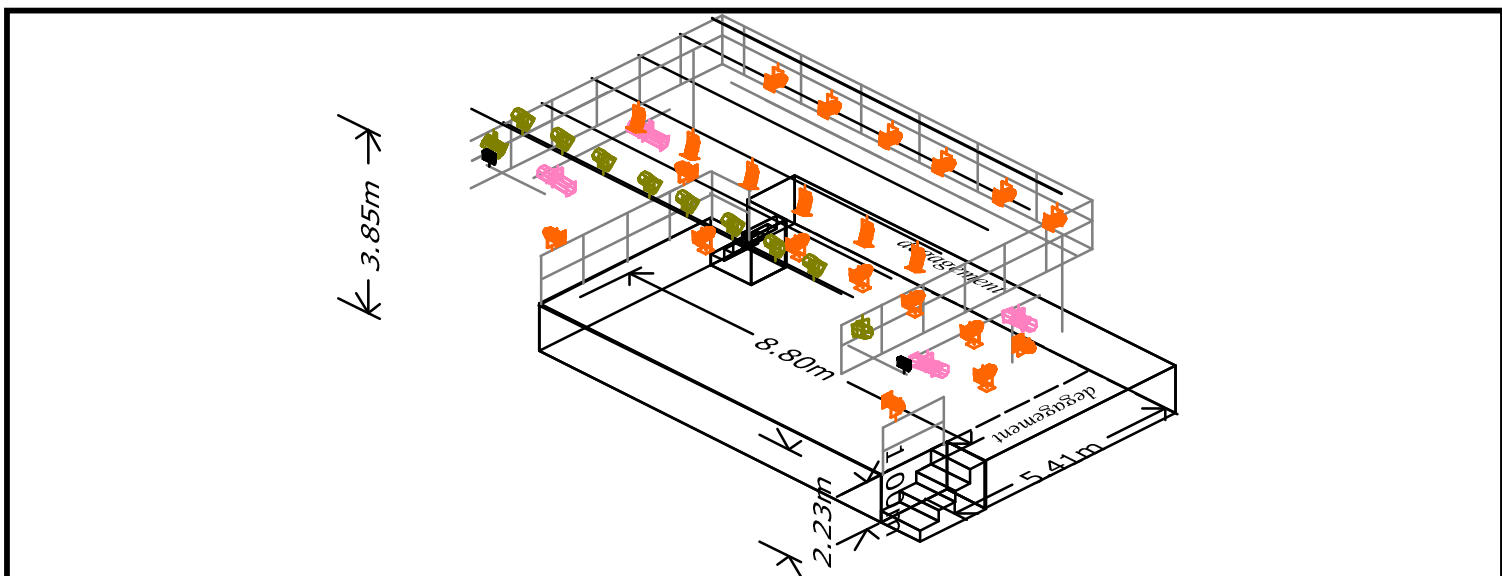
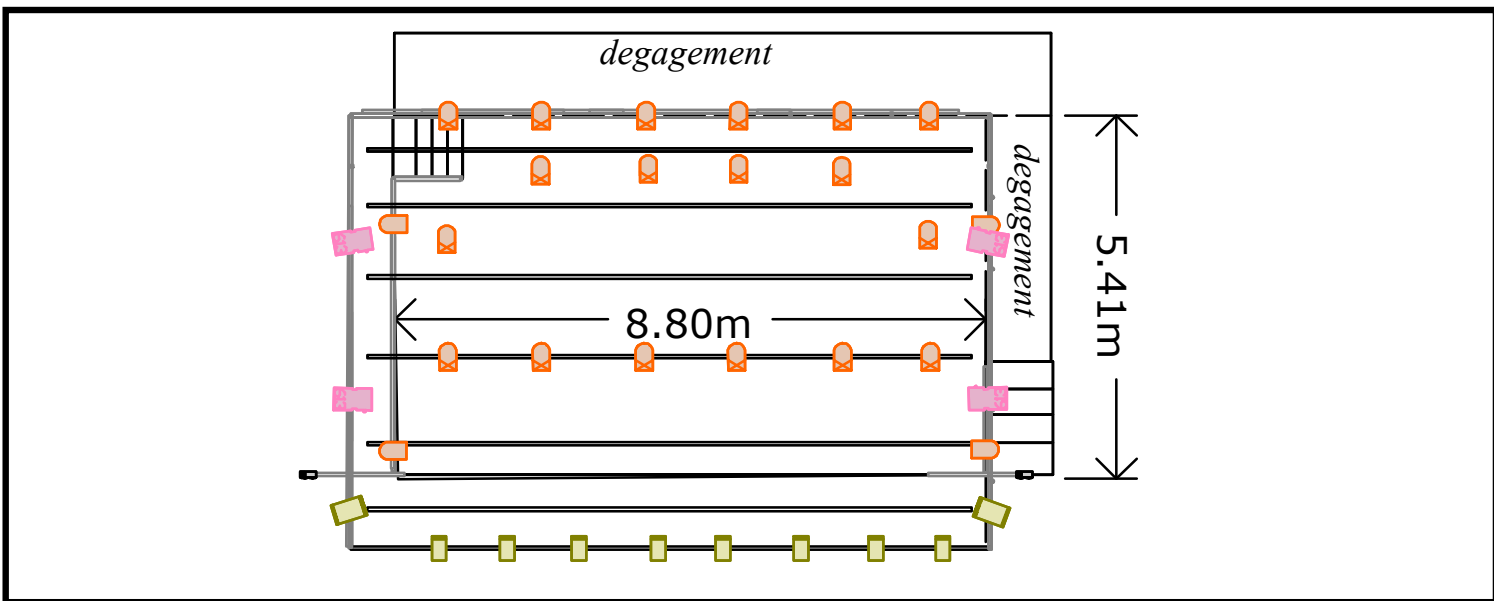
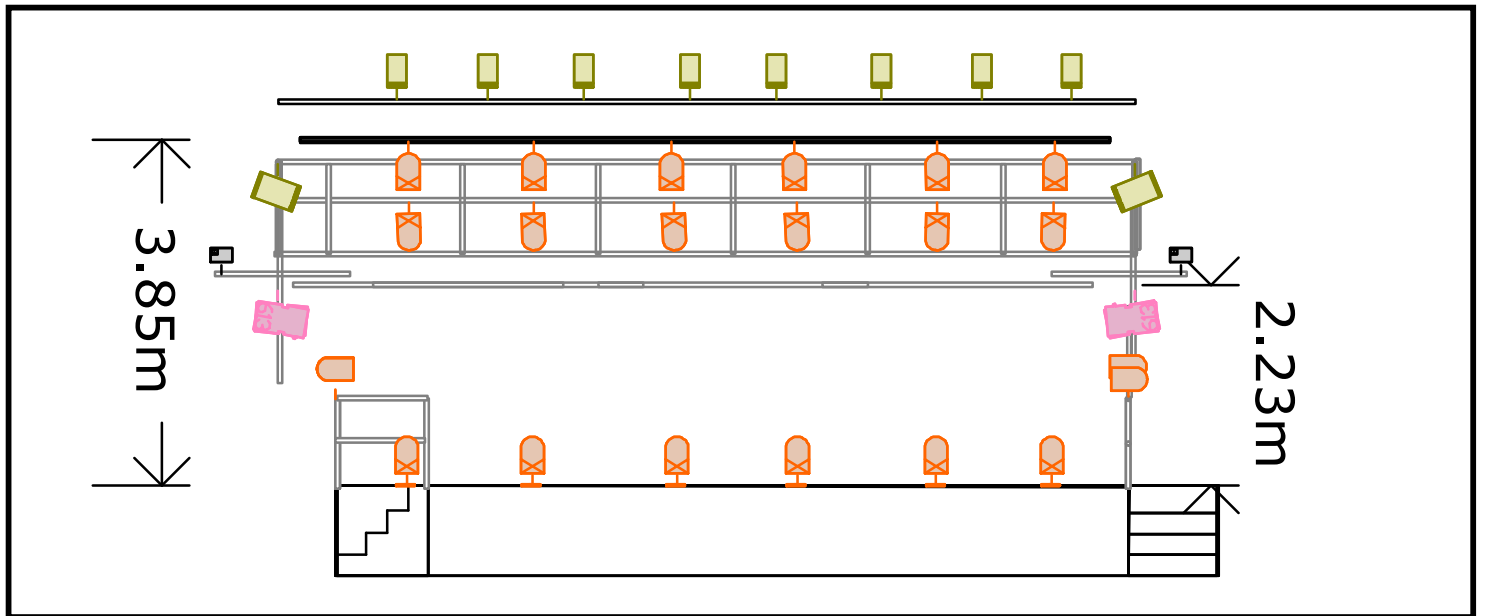
PATCH MACHINES



Legende

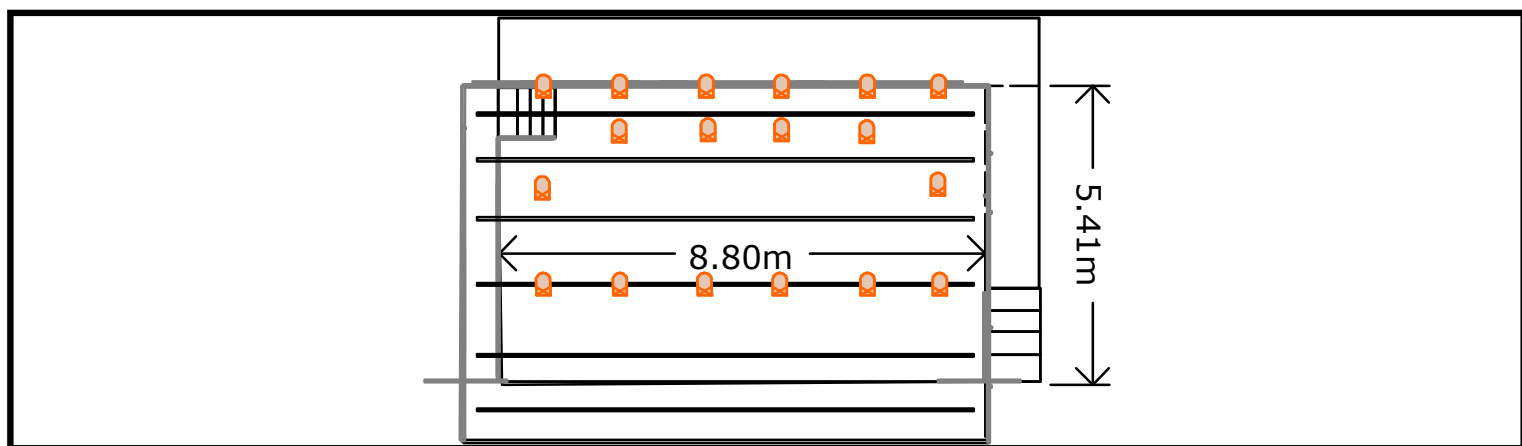
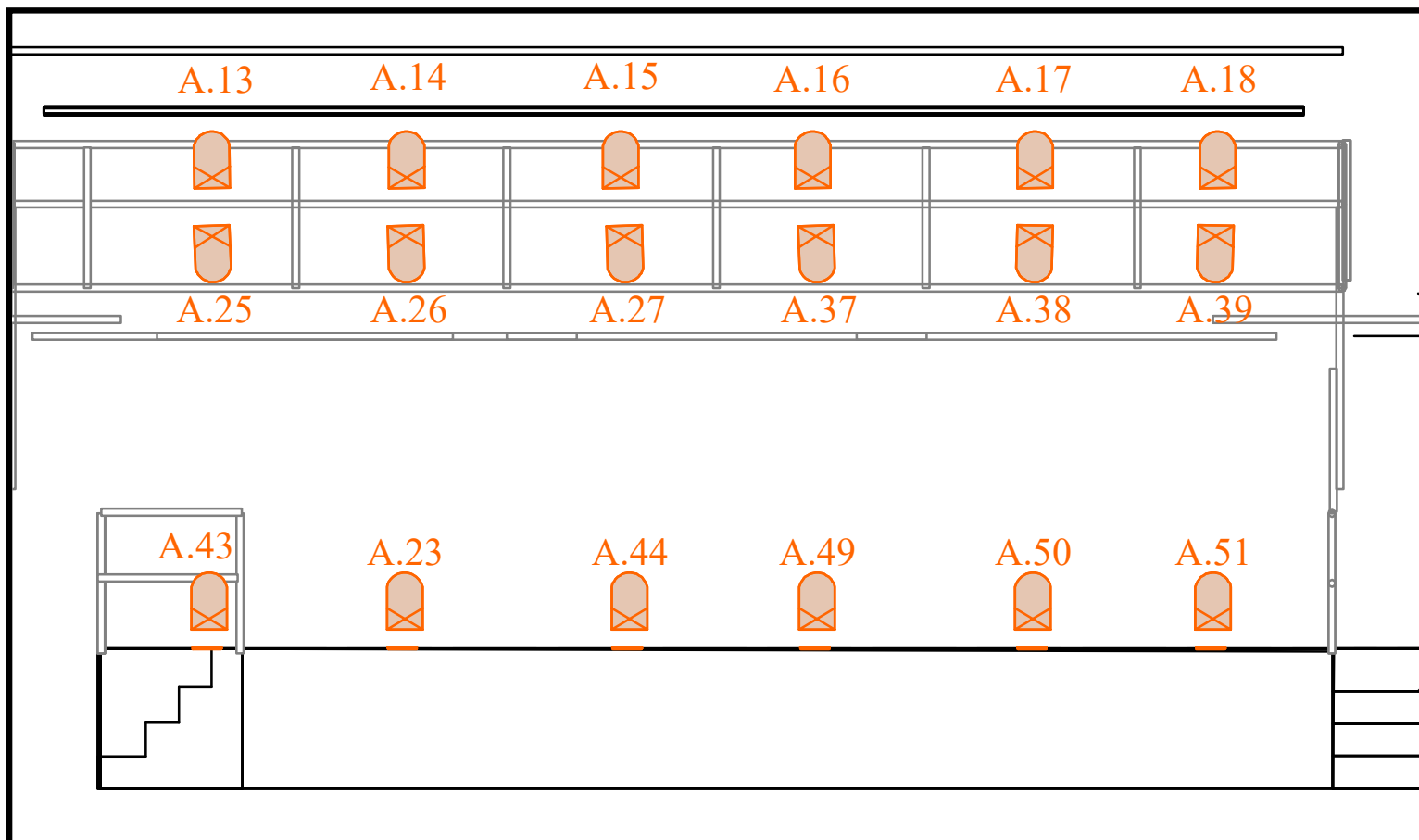
Symbol	Name	Fixture Options	Count
 	Axcor Spot 300	CMY: CMY	8
 	MAC Aura	Mode: Std.; PTSP: Fast; Colour Calib: Off	12
 	Stormy CC	Mode: Standard	2
 	Sunstrip Active Dmx	Channel Mode: 10	6
 	Unique 2.1 Hazer		1

IMPLANTATION TRAD







PATCH TRAD

Pars

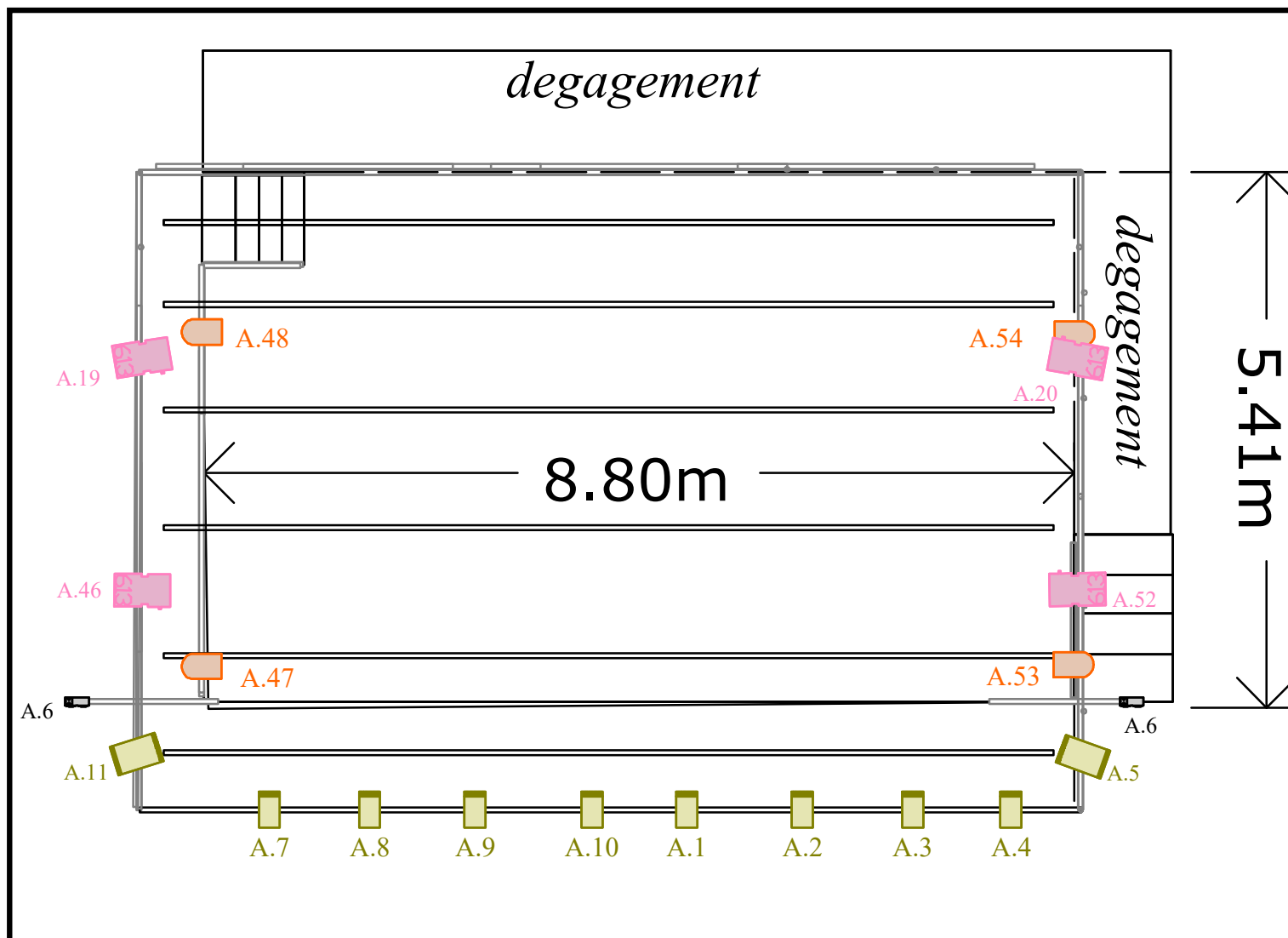


legende





Symbol	Name	Lamp	Count
	PAR 64	CP/62 230V - MFL	4
	306 HPC	CP/67 230V	8
	310 HPC	CP/70 230V	2
	613SX	CP/70 230V	4

PATCH TRAD

Latéraux/ PC / Face



legende

Symbol	Name	Lamp	Count
	PAR 64	CP/62 230V - MFL	4
	306 HPC	CP/67 230V	8
	310 HPC	CP/70 230V	2
	613SX	CP/70 230V	4

SERVICE SALLE :
PC salle: A.12
GIURLANDE : A.42